



I SPY Instruments

PRESENTED BY



EXPLORE the galleries to find the many instruments of country music.

Hint: Most questions have multiple answers!

NOTE: Sometimes artifacts are removed from view because they need to rest. If you can't find something, it may be that the object is resting in the archive. Do the best you can and don't fret if you can't find something. (Fret... get it?)

I SPY SIZE

Find the **largest instrument** you can. What is it called? _____.

Find the **smallest instrument** you can. What is it called? _____.

I SPY STRINGS

Find an instrument with this many strings. Write down its name and a fun fact from its label.

8 strings _____

6 strings _____

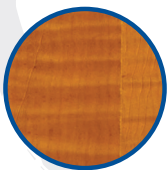
5 strings _____

4 strings _____

0 strings _____

I SPY MATERIALS

Find these materials on an instrument and write its name found on the label.



Wood



Metal



Pearl



Animal Hide

I SPY DESIGN

Artists often like to personalize their instrument. **Find the following features** on instruments in the galleries. **Write the artist's name** in the appropriate box.



Wood Carving



Animal Image



Name or Words



Plant or Flower

I SPY COLOR

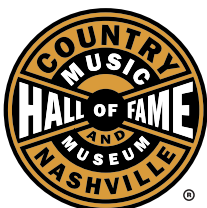
Find a BLUE instrument. Who did it belong to? _____

Find a BLACK instrument. Who did it belong to? _____

Find a WHITE or SILVER instrument. Who did it belong to? _____

Do you play an instrument or would you like to learn to play an instrument?

How would you customize your instrument? **Draw a picture below.**



SUPPORTED BY:



Museum programs are funded in part by ACM Lifting Lives, Metropolitan Nashville Arts Commission, Nashville Parent, Springer Mountain Farms, and Tennessee Arts Commission.

@CountryMusicHOF • Downtown Nashville • CountryMusicHallofFame.org • 615.760.6500

The Country Music Hall of Fame® and Museum is operated by the Country Music Foundation, Inc., a Section 501(c)(3) non-profit educational organization chartered by the state of Tennessee in 1964.